



HIGH- PERFORMANCE OPTICAL SOLUTIONS

Boost your network with BenKa's advanced technology, ensuring speed and stability in every connection.



QUALITY PRODUCTS
CREATE EFFICIENT
NETWORKS

BENKA

Benefits of Being a BenKa Partner



Direct from the factory

Buy without intermediaries and save

Eliminate additional costs by purchasing products directly from the BenKa factory, ensuring the best prices on the market.



Innovative products

Access the latest fiber optic technology

Our products are designed with cutting-edge technology to provide you with innovative and efficient solutions for your fiber optic network.



Quality guarantee

Protect your investment with confidence

With our solid warranty, you can be sure that every product you purchase is backed and protected against defects.



Short production time

Quick solutions for your projects

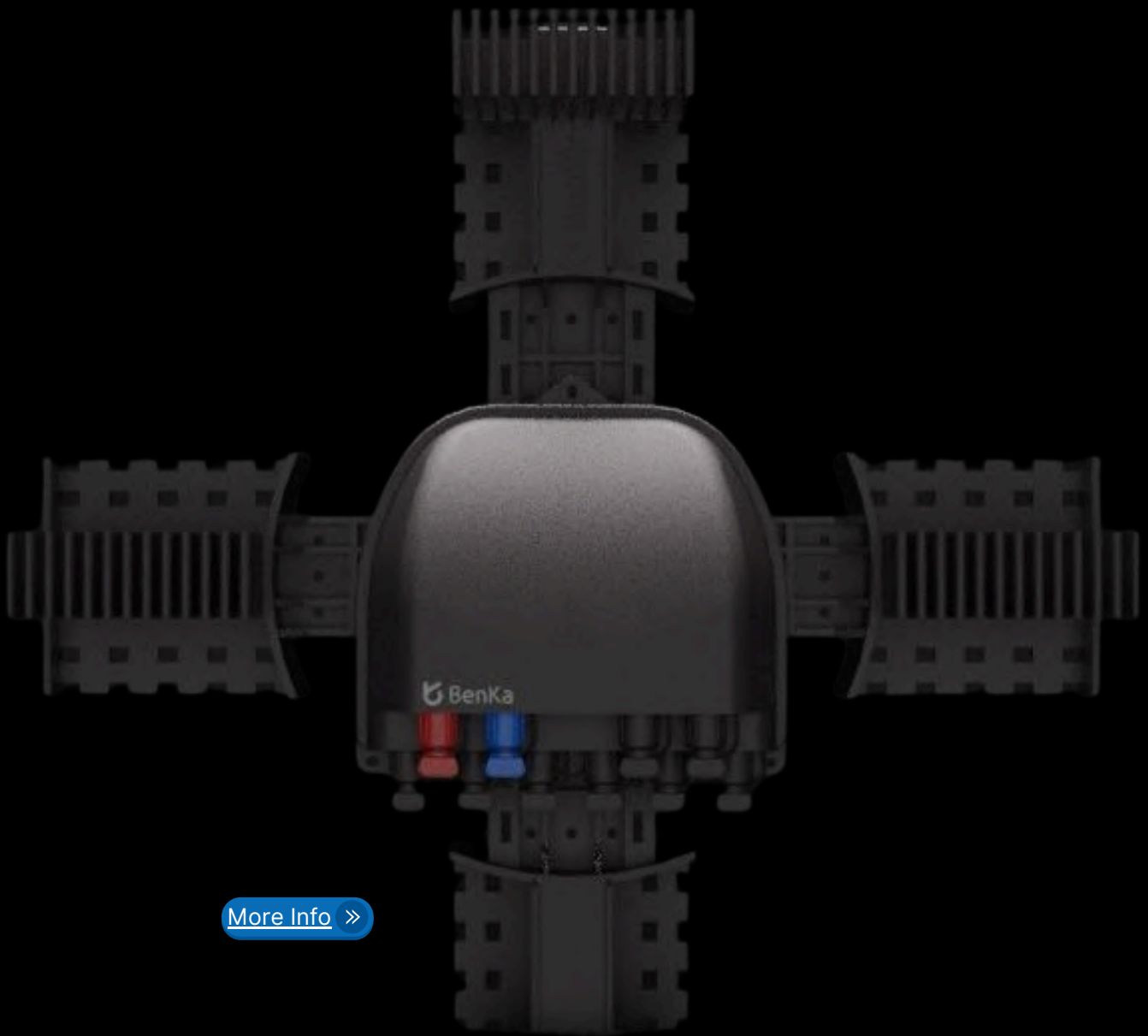
We focus on short production times so you can start your projects without delays and with the utmost promptness.



Technical support included

Specialized assistance always available

We offer continuous technical support to resolve any questions or issues that arise, ensuring your experience is seamless.



[More Info >>](#)

Certifications



Compliance

Total quality assurance with international management standards.



Certificate

Certification that guarantees safety and environmental protection in Europe.



Approved

Product approved according to telecommunications guidelines in Brazil.



Conformity

Compliance with regulations that limit hazardous substances in electronics.



One Click / Plug&play

The pre-connectorized network system, also called OneClick or Plug&Play, is the safest and most stable method for deploying optical networks.

Pre-connectorized networks or PRECON suggest easy installation, low maintenance costs, greater durability, and stability in the network.

Additionally, the system has two options: balanced networks and unbalanced networks, making it a scalable network and allowing for long-term projects with easy network expansion.

[More Info](#) >>



HUB-BOX: PRE-CONNECTORIZED TRUNK DISTRIBUTION BOX

- 4 high-density cable inlets and outlets and 8 or 16 outlets for pre-connectorized drop cable.
- Includes 1x2 splitters for trunk branching.



INT-BOX: PRE-CONNECTORIZED INTERMEDIATE NAP BOX

- 1 pre-connectorized mini-SC/APC inlet.
- 8 pre-connectorized mini-SC/APC outlets for drop connections.
- 1 pre-connectorized branch for the next NAP box. Includes FBT splitters 70/30 + 1x8 (configuration on demand).



END-BOX: PRE-CONNECTORIZED TERMINAL NAP BOX

- 1 pre-connectorized mini-SC/APC inlet.
- 8 pre-connectorized mini-SC/APC outlets for drop connections.
- 1 pre-connectorized branch for the next NAP box. Includes FBT splitters 70/30 + 1x8.



Why choose Precon?



Flexibility and Scalability

The modular installation allows for easy expansion and adjustment without interruptions.



Fast and Efficient Installation

Pre-installed connectors eliminate steps and require less personnel, saving time and costs.



Quality and Reliability

Pre-connectorized connectors ensure optimal performance and minimize failures.



Easy Maintenance

Standardized connectors simplify maintenance and fault detection.



Cost Reduction

-21% Total project cost.

-39% Labor and hardware cost.

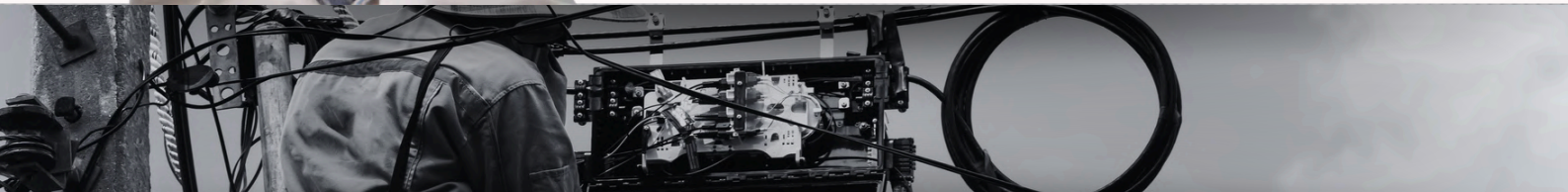
-50% Amount of man-hours.

-40% Installation time.

-94% Number of splices in the distribution network.



[More Info >>](#)





Carry out

**YOUR PROJECTS
WITH US**

[More Info >>](#)

DISCOVER OUR MODELS

The best way to enhance
your optical network.

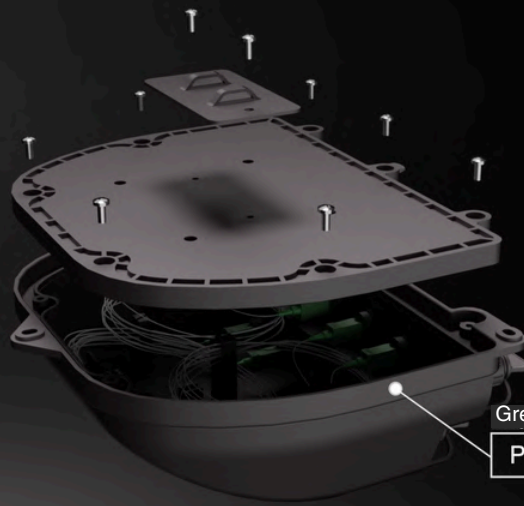


RELIABLE EQUIPMENT
FOR A DEPENDABLE AND
LONG-LASTING
NETWORK

BENKA

Compact design

208x224x82(mm)

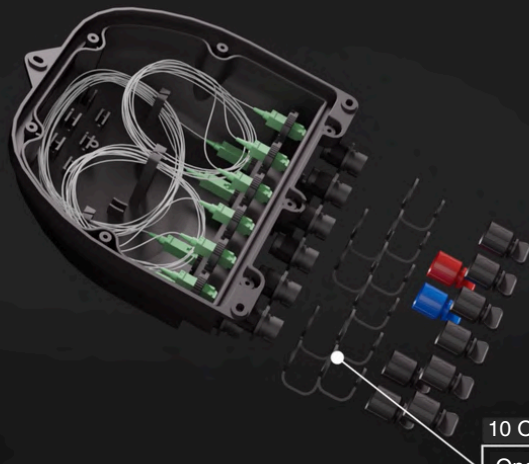
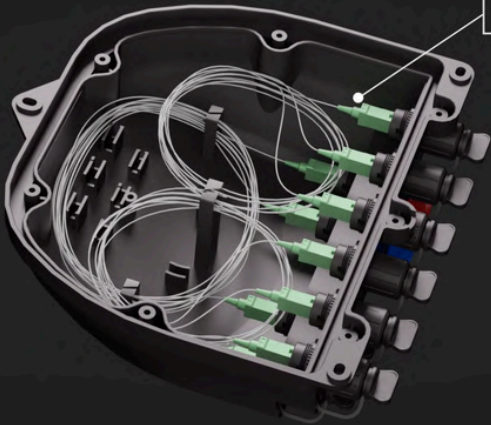


Greater resistance

PP+GF (Anti UV)

Stable connection

Splitter SC/APC



10 Outputs

One click connector



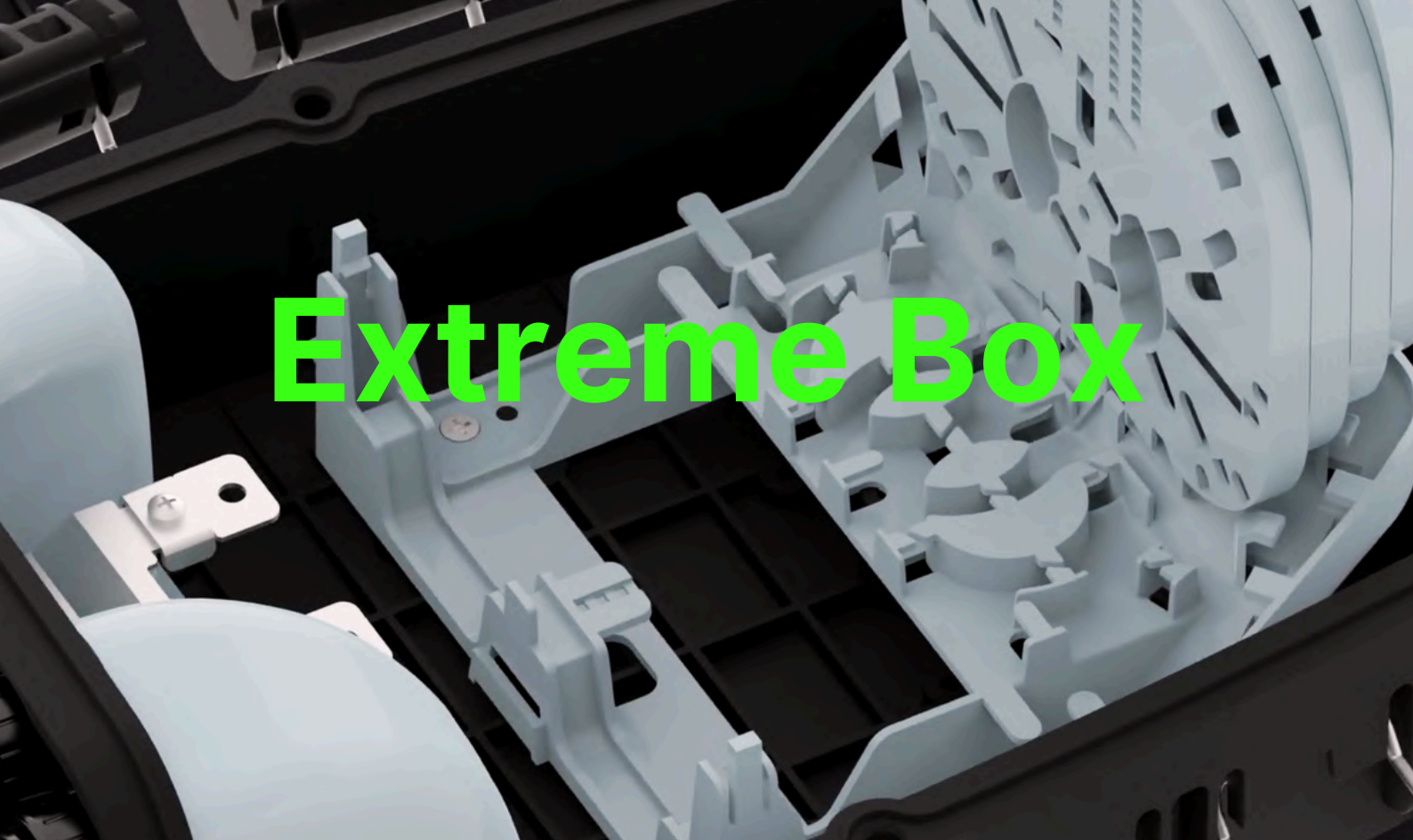
Turtle Box

BK-FDB-10PC

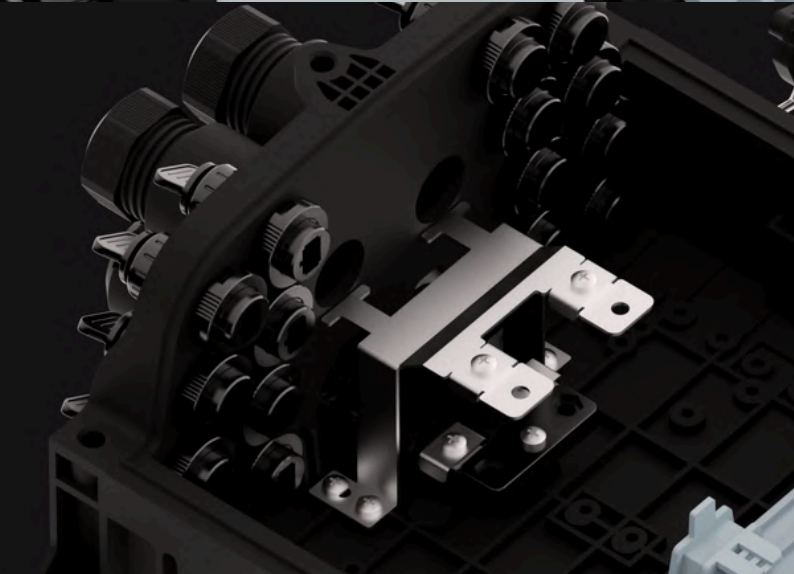
[More Info >>](#)

 **BenKa**





Extreme Box



[More Info >>](#)



BK-FDB-16PC-II

Material: PC+ABS
Type of Splitter: Mini PLC
Insertion Loss: ≤ 0.2 dB
Return Loss: ≥ 50 dB (UPC); ≥ 60 dB (APC)
Protection Grade: IP68
Wall-mounted or pole-mounted

BK-FTB-16PC-III

Material: PC+ABS
Ports for SC adapters: 16 ports
Capacity for fusion trays (8 fibers): 2 ports
Dimensions: 240x210x120
Protection Grade: IP68i



BK-FDB-8PC-III

Dimensions: 316x200x97 (MM)
Splice Capacity: 24 fibers
Adapter Capacity: 8 ports
Cable Inlet Ports: 4 ports
Cable Outlet Ports: 8 ports
Protection Grade: IP68

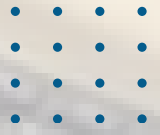
BK-FDB-10PC-II

Material: PC+ABS
Dimensions: HxWxD = 179x171x66 (MM)
Splitter Type: 1:4 / 1:8 Mini PLC
Protection Grade: IP68
Wall Mount/Pole Mount



BK-FDB-8PC-HI

Material: PC+ABS
Dimensions: HxWxD = 313x195x120 (MM)
Splice Capacity: 48 fibers
Adapter Port: 8 ports
Protection Grade: IP68
Wall Mount/Pole Mount



DRIVING AND CONNECTING CITIES.

Building the networks of the future.



BENKA DISTRIBUTION BOX LINE



BK-FTB-16D

Material: PC+ABS
Splice Capacity: 12 fibers
Splitter Capacity: 1:8 / 1:16 Mini PLC
Dimensions: HxWxD = 250x200x72 (MM)
Wall Mount / Pole Mount



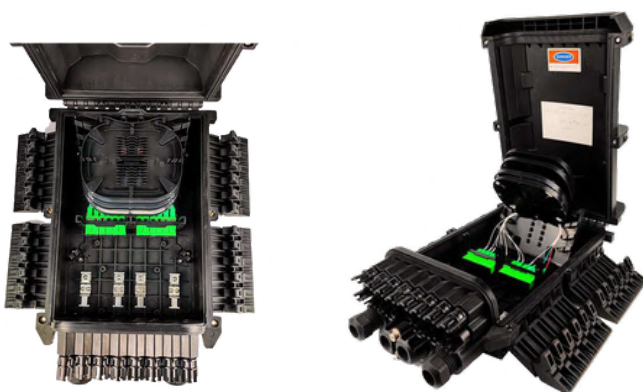
BK-FTB-16A

Material: PC+ABS
Splice Capacity: 24 fibers
Adapter Capacity: 12 / 16 ports
Dimensions: HxWxD = 290x210x110 (MM)
Wall Mount / Pole Mount



BK-FTB-16B

Material: PC+ABS
Splice Capacity: 32/96 fibers
Adapter Capacity: 16 / 24 ports
Dimensions: HxWxD = 253x198x100 (MM)
Wall Mount / Pole Mount



BK-FDB-16P

Material: PC+ABS
Splice Capacity: 96 fibers
Adapters: 24 units
Dimensions: HxWxD = 388x242x128 (MM)
Wall Mount / Pole Mount



BK-FDB-C16

Material: PC+ABS
Splice Capacity: 24 fibers
Adapter Capacity: 12 and 16 ports
Dimensions: HxWxD = 200x360x100 (MM)
Wall Mount / Pole Mount



BK-FTB-A4

Material: PC+ABS
Splice Capacity: 4 fibers
Adapter Type: 1:4 Mini PLC
Dimensions: H×W×D = 191×120×44 (MM)
Wall Mount / Pole Mount



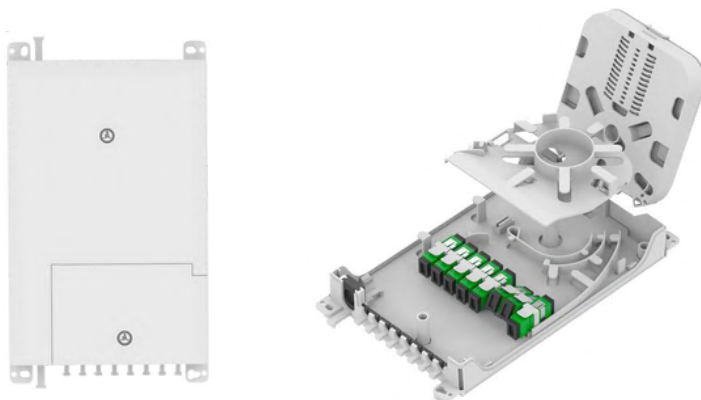
BK-FTB-B8

Material: PC+ABS
Adapter Ports: 8 units
Splice Capacity: 16 fibers
Dimensions: H×W×D = 216×155×45 (MM)
Wall Mount / Pole Mount



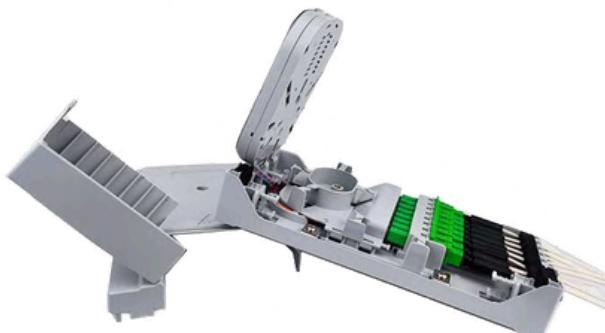
BK-FTB-A2

Material: PC+ABS
Splice Capacity: 4 fibers
Adapter Ports: 2 ports
Dimensions: H×W×D = 176×121×31 (mm)
Wall Mount / Pole Mount



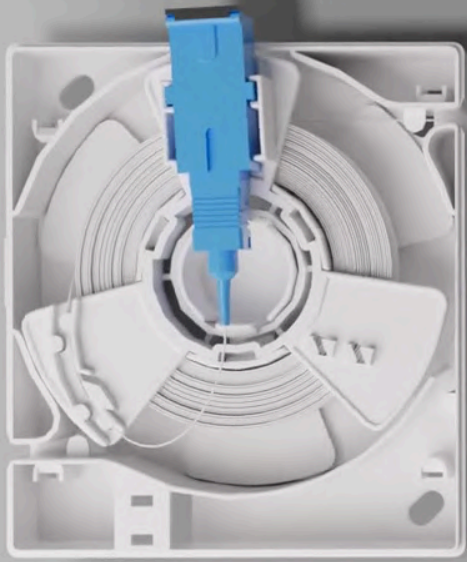
BK-FDB-2A8

Cable Inlets and Outlets: 2 ports (Main Cable) + 8 ports (Drop Cable)
Splice Tray Capacity: 2 units (12 fibers per tray)
Wall Mount



BK-FDB-2B8

Material: PC+ABS
Splice Capacity: 16 cores
Adapter Ports: 8 pcs
Dimensions: H×W×D = 235×126×52 (MM)
Wall Mount / Pole Mount



MORE THAN 15 DIFFERENT SOCKET MODELS



Model	BK-PTO-S1
Dimensions	H×W×D = 93×83×30 (MM)
Material	PC+ABS
Color	White
Installation	71×63
Type of adapter	SC

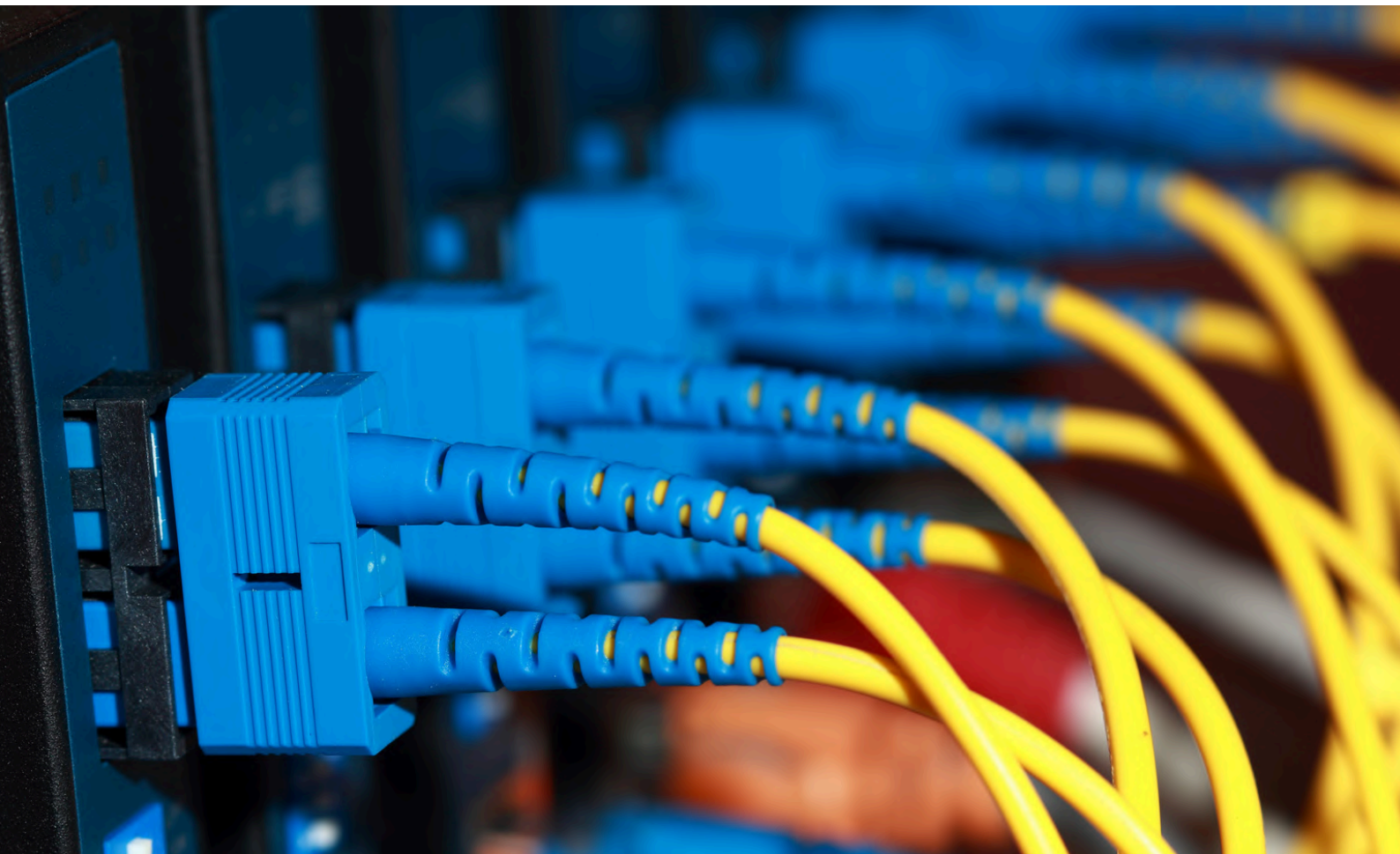
Model	BK-PTO-S3
Dimensions	H×W×D = 116×85×22 (MM)
Material	ABS
Color	White
Type of adapter	SC
Adapter capacity	1 Port

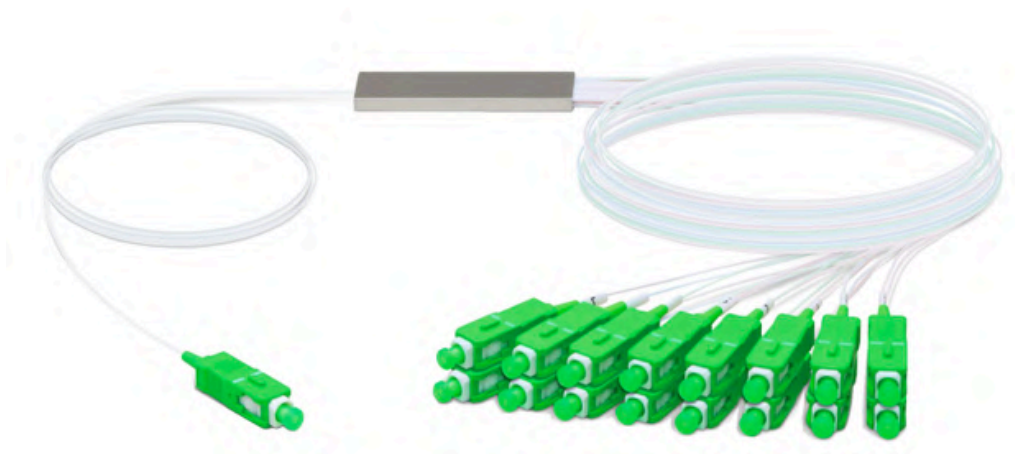


[More Info »](#)

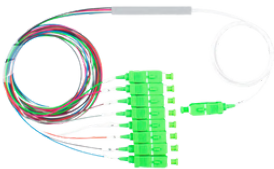
COMPONENTES PASIVOS BENKA

Quality in every component.





HIGH-PERFORMANCE SPLITTER



BK-PLC-SC-A-1X16



BK-PLC-ABS-1X16



BK-PLC-NC-1X8



BK-PLC-RMOUNT-108

[More Info >>](#)



[More Info >>](#)

-  Data transmission
-  Telecommunication
-  Testing equipment
-  LAN indoor/outdoor
-  Optical fiber CATV
-  WBN

HIGH-PRECISION PATCH CORDS AND PIGTAILS



BK-FPC-SCU-STU-SX



BK-FPC-STU-STU-SX



BK-FPC-LCU-LCU-SX-OM3



BK-FPC-SCU-STU-SX-OM2



BK-FPT-SCA-SX



BK-FPT-SCU-SX

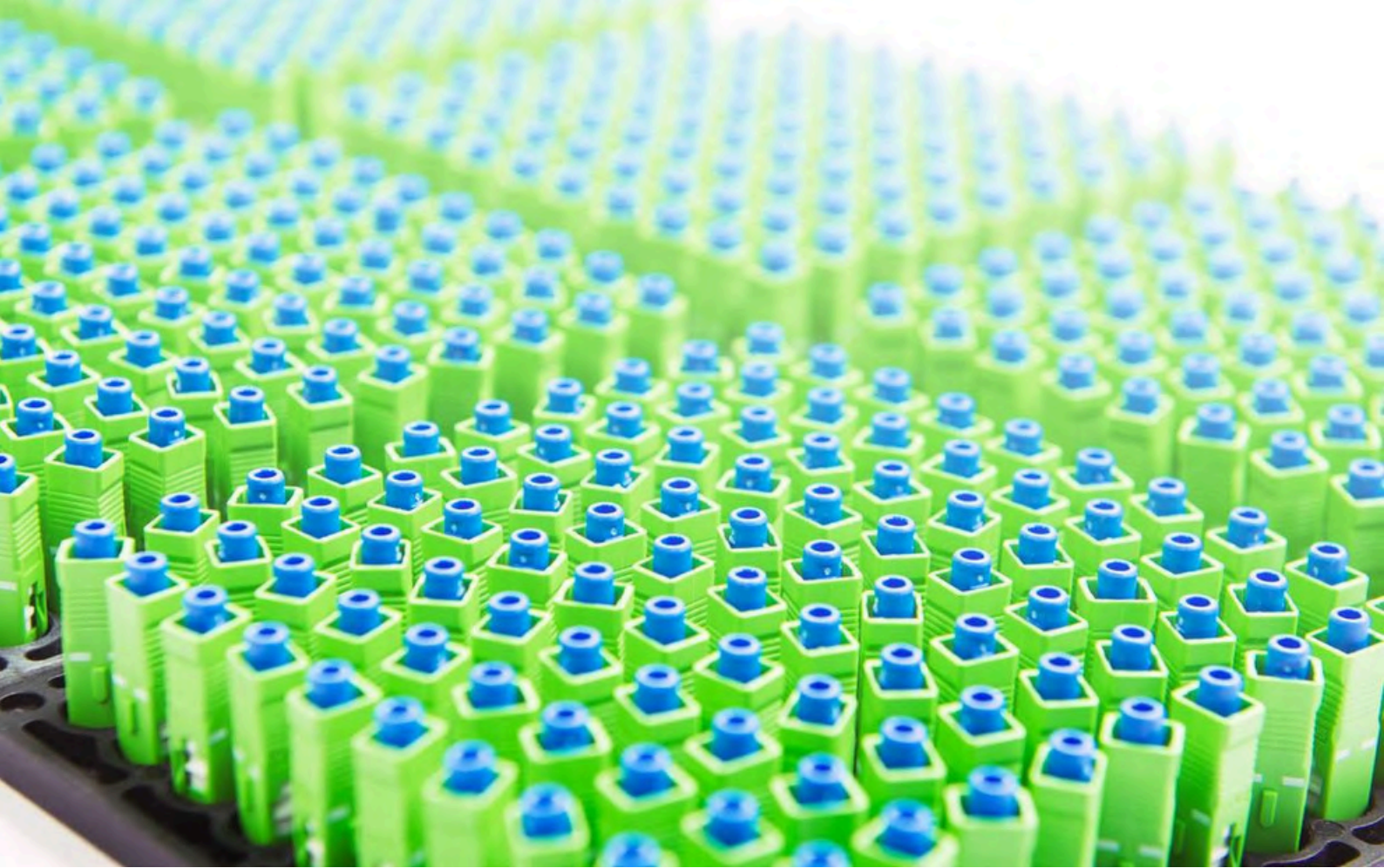


BK-FPT-LCA-SX



BK-FPT-LCU-SX-OM3





Premise environments



Connections at the desk for LAN environments



Equipment test leads



Direct equipment termination

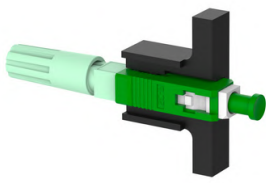


Fiber to the Subscriber (FTTx) applications

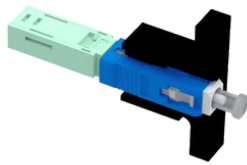


Repair/replacement requirements

CONNECTORS FOR EVERY NEED



BK-FC-A-TS-1



BK-FC-A-TC-1



BK-FC-A-TC-3



BK-FC-U-TC-2



BK-FC-A-TC-5



BK-FC-A-TS-3

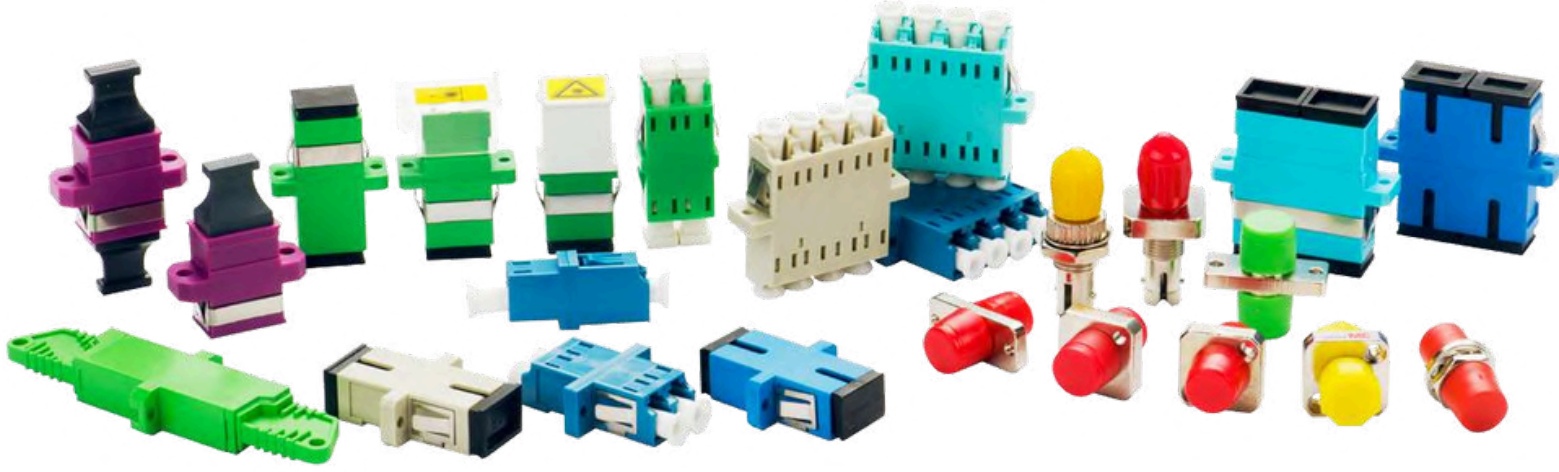


BK-FC-A-TS-2



BK-FC-A-TS-4

[More Info >>](#)



FTTH



Local area networks (LANs)



Telecommunication networks



Wide Area Networks (WANs)



Data processing networks



Test equipment

BENKA OPTICAL ADAPTERS



BK-AD-SCA-SX-SM



BK-HA-FC-SC-U-SX-1



BK-AD-LCA-SX-SM



BK-AD-LCA-SX-MM



BK-AD-SCA-DX-SM



BK-AD-SCU-SX-SM



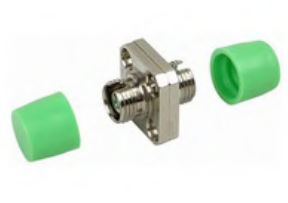
BK-AD-SCU-SX-MM



BK-AD-SCU-DX-MM



BK-AD-FCU-SX-SM



BK-AD-FCA-SX-SM



BK-AD-STU-SX-SM

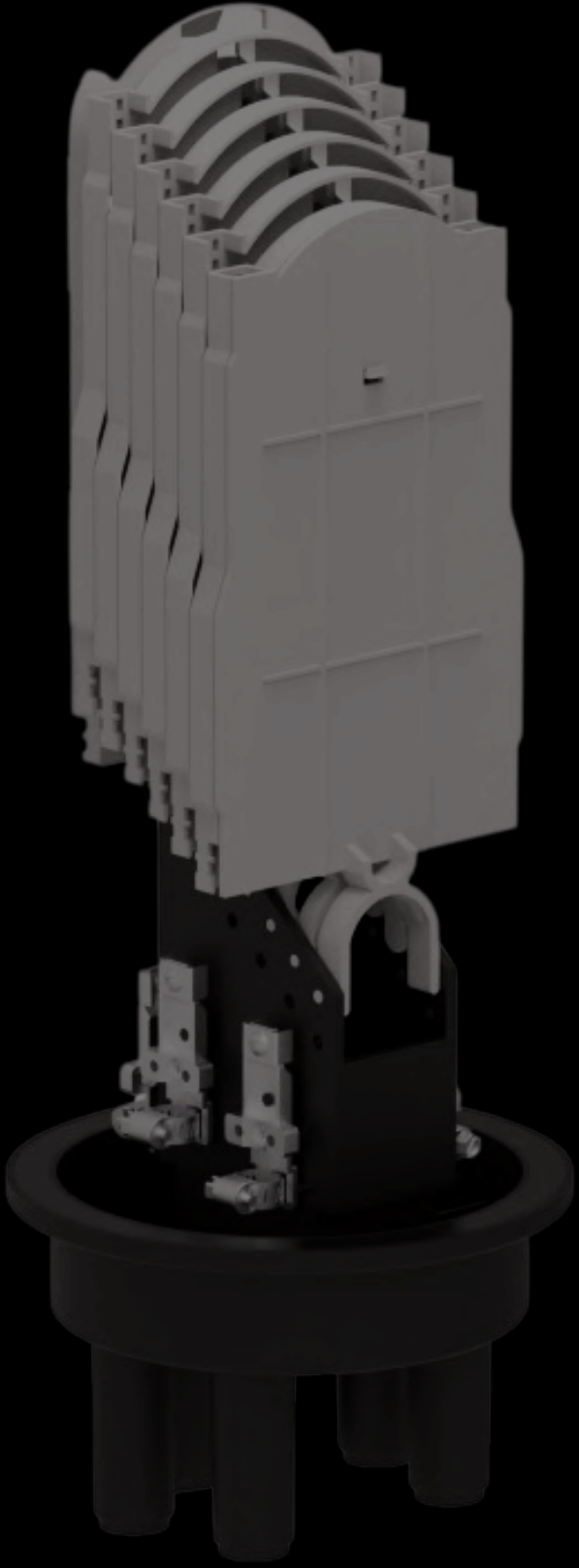


BK-AD-STU-SX-SM

[More Info >>](#)



SPLICE CLOSURES



Heat shrink sealing



Mechanical sealing

BK-FCB-V5

WIDE VARIETY OF SPLICE CLOSURES AVAILABLE



FIBER CLOSURE BOX V9

Up to 48 fibers

BK-FCB-V9

FIBER CLOSURE BOX V7

Up to 384 fibers

BK-FCB-V7

FIBER CLOSURE BOX E1

Up to 12 fibers

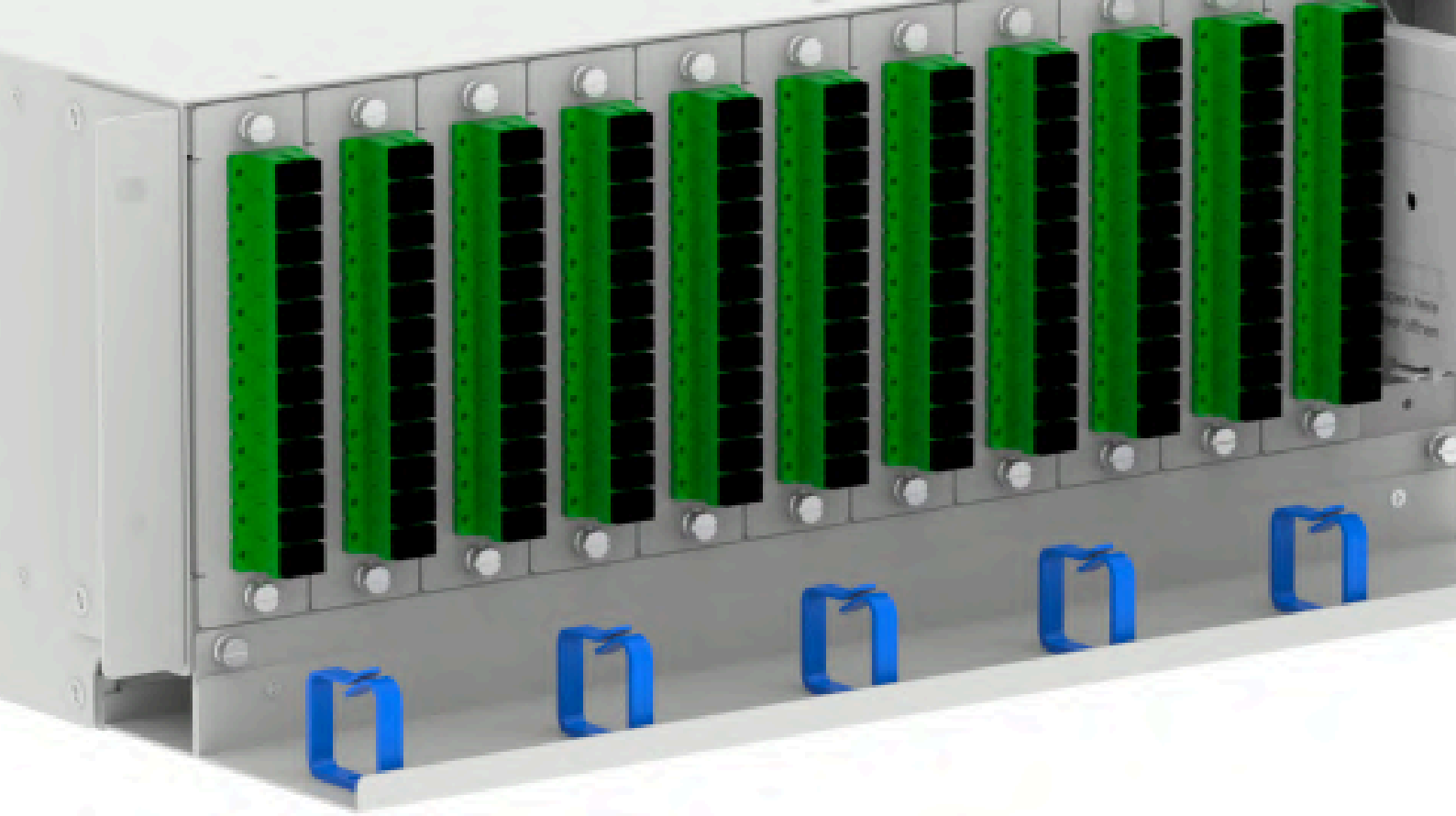
BK-FCB-E1

FIBER CLOSURE BOX V10

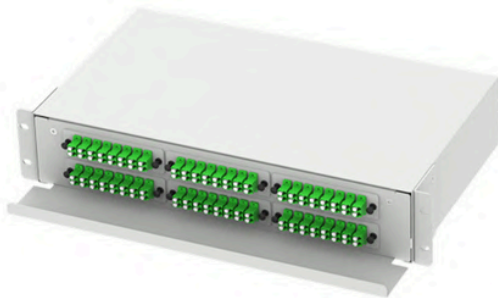
Up to 144 fibers

BK-FCB-V10

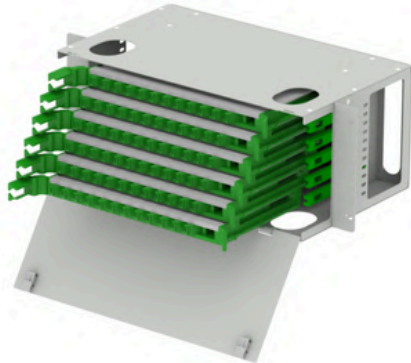
[More Info >>](#)



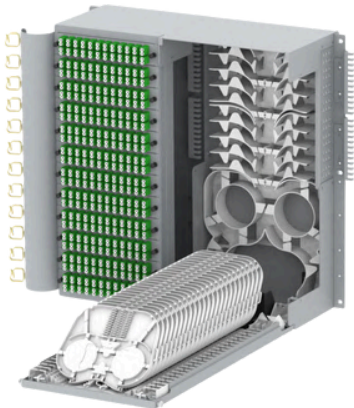
DISCOVER OUR COMPLETE LINE OF ODFS



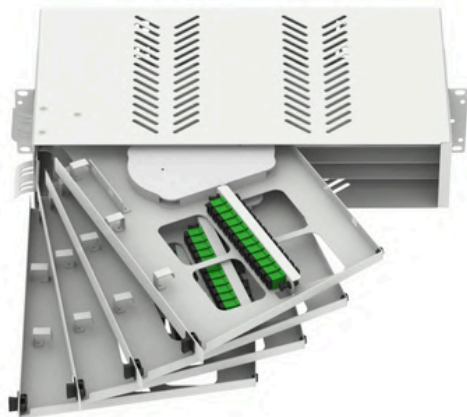
BK-ODF-D1



BK-ODF-D4



BK-ODF-SD6



BK-ODF-D10

[More Info >>](#)

DO YOU NEED OPTICAL CABINETS?

SPECIFICATIONS

- Anti-UV (Ultraviolet)
- Grounding device included
- Protection class: IP65
- Flexible configuration changes

APPLICATIONS

- FTTH access network
- Telecommunications network
- Data communications network
- Local area networks
- Ground-mounted or pole-mounted



[More Info >>](#)

DISCOVER OUR COMPLETE LINE OF FRAMES



BK-FRA-E8

Model	BK-FRA-E8
Material	Cold-rolled steel
Color	Cold-rolled steel
Installation Capacity	47 U
Dimensions	H x W x D=2200 x 875 x 610 (MM)
Installation Method	Floor-mounted

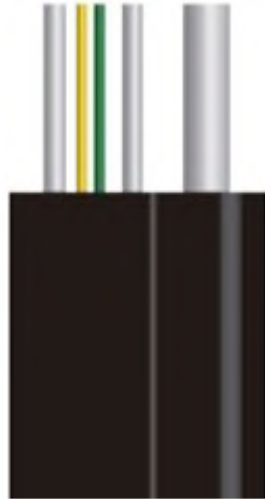
[More Info >>](#)

CABLES BENKA

CONNECTIVITY FOR ALL ENVIRONMENTS



COMPLETE SOLUTIONS IN FIBER OPTIC CABLES



GJYXCH/GJYFXCH

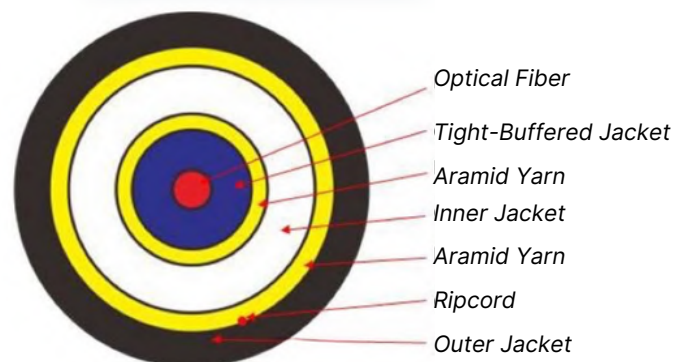
Designed for last mile connections, this cable is ideal for FTTH (fiber to the home) deployments due to its flexibility and easy installation indoors and outdoors.



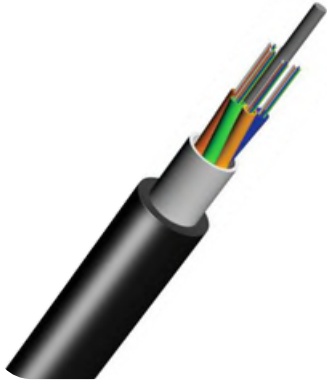
Cable Structure

GJFJH631

Similar to the standard drop cable but with a round structure that provides greater strength and durability in outdoor environments, allowing for installations over long distances.

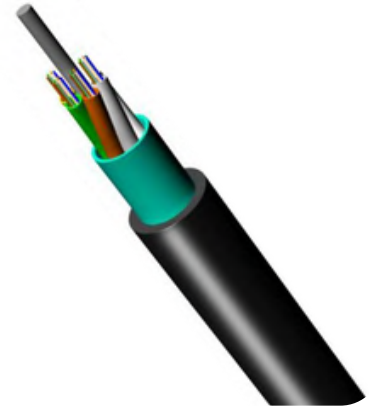


Cable Structure



ADSS 12-72 F

A self-supporting fiber optic cable, metal-free, designed for aerial installations without the need for additional support, ideal for electrical environments.



GYTS

Fiber optic cable with a loose tube, reinforced and protected by a corrugated steel sheath, suitable for underground applications and environments with high mechanical exposure.



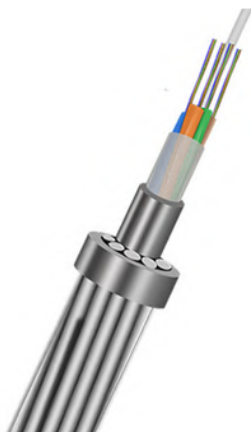
GYXTW

This cable features loose tubes and steel reinforcement rods, making it ideal for installations in ducts and conduits with crush protection and high tensile strength.



ASU80

Self-supporting cable, specifically designed to withstand high tensions and extreme weather changes, perfect for aerial deployments in urban areas.



OPGW

The OPGW cable combines high-speed communication and electrical protection, making it ideal for transmission networks that require safety and efficiency in a single cable.

[More Info >>](#)



OPTICAL TESTING INSTRUMENTS

Excellence and precision: Discover our complete range of fusion splicers, OTDRs, and tool kits.

[More Info >>](#)



HIGH-PERFORMANCE ASSET LINE

BenKa offers a complete line of fiber optic assets, including ONUs, OLTs, switches, and routers.

Discover how our products can optimize your networks.

[More Info >>](#)

Launch Reel



BK-BL-LM1000



BK-BL-LM500



BenKa Technologies co., Ltd

WE ARE CLOSE TO YOU

With representatives in various countries around the world, it doesn't matter where you are.



+34 610 251 751



info@benkatechnologies.com



benkatechnologies.com

[More Info >>](#)